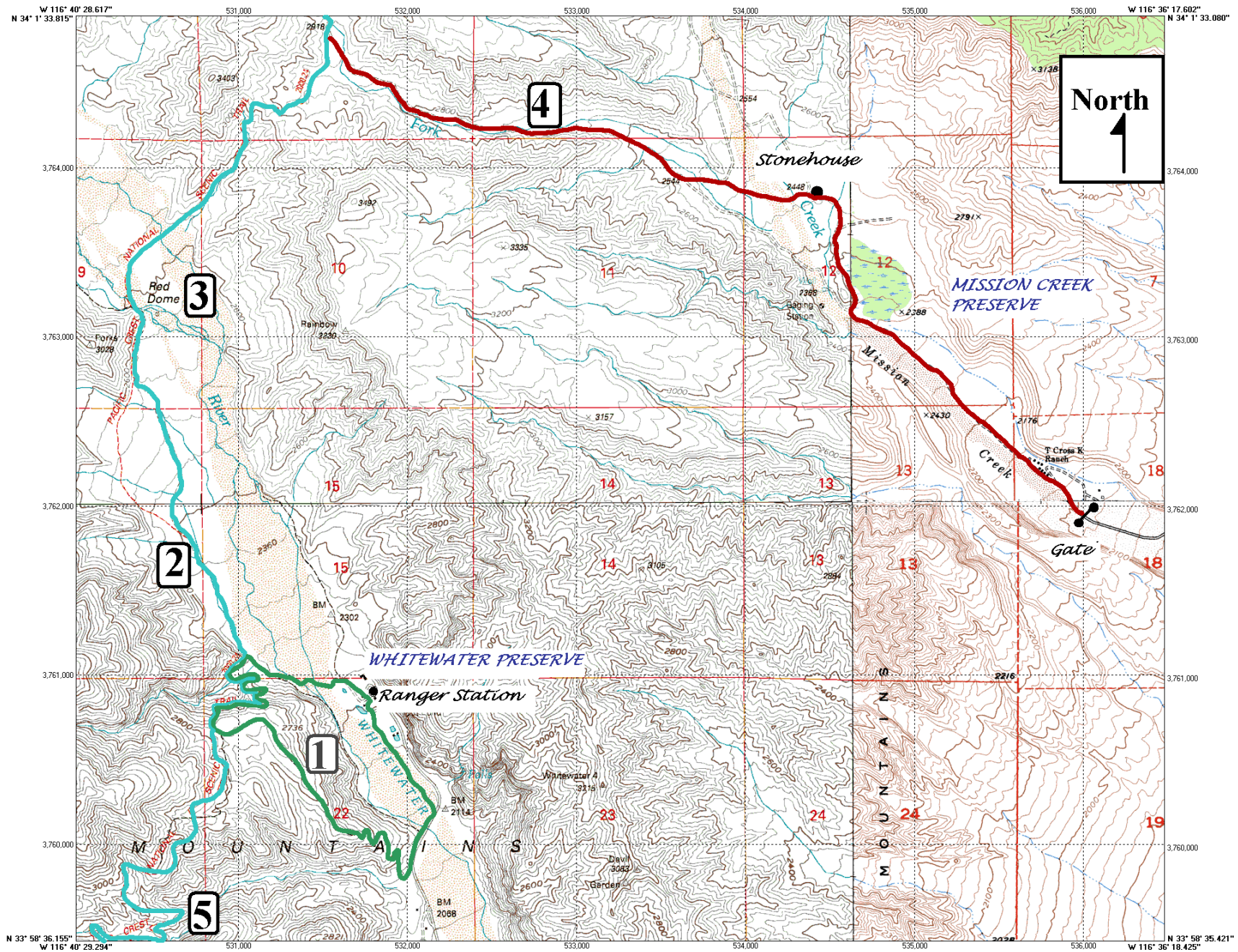
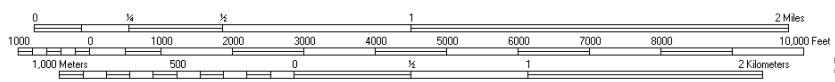


# Trails of the Whitewater and Mission Creek Preserves



1327 North American Datum: 1,000-meter UTM grid zone 11  
 Generated by BigTopo (www.igage.com)  
 Map compiled from USGS Quads: Calclaw Flat, CA. Morongo Valley, CA. White  
 Water, CA. Desert Hot Springs, CA.



whwmap.IT3

BigTopo Map



# THE WILDLANDS CONSERVANCY

*"To preserve the beauty and biodiversity of the earth, and to provide programs so that children may know the wonder and joy of nature."*

## WHITEWATER PRESERVE

**1. Canyon View Loop Trail** 3.5 miles Moderate

A loop trail with excellent views of the canyon and surrounding mountains. This trail leaves from the Whitewater Ranger Station, and follows a segment of the Pacific Crest Trail heading south. When crossing the riverbed, keep your eyes peeled for a small wooden footbridge that will carry you across the Whitewater River.

**2. Pacific Crest National Scenic Trail "PCT"** A 2650 mile trail that runs from Mexico to Canada

Get there in 1/2 mile along a trail from the Whitewater Ranger Station.

**3. Red Dome** 2 miles each way, 4 miles total Easy - moderate

Leave the Whitewater Ranger Station and hike to the Pacific Crest Trail. Hike north on the "PCT" 1.5 miles to this small red rock hill in the canyon bottom. Continue past Red Dome if you wish to reach the West Fork Trail.

**4. West Fork Trail** 1.6 miles from gate to Stonehouse, 3.6 to Pacific Crest Trail Easy-moderate

The West Fork Trail departs from the Mission Creek Preserve gate, and passes the historic Stonehouse in 1.6 miles on its way to the Pacific Crest Trail. It is an eight mile hike from the Mission Creek Preserve gate to the Whitewater Preserve Ranger Station.

**5. Cottonwood Trailhead along the Pacific Crest Trail** 8 miles Moderate - Difficult

Follow the Pacific Crest Trail south from the Whitewater Ranger Station to reach this parking lot off the Haugen-Lehmann exit on Interstate 10.

The Whitewater preserve is open daily from 8 am to 5 pm with the exception of Thanksgiving, Christmas, and New Year's Days, or in the event of dangerous weather conditions. Permits for preserve camping, backcountry trip parking, and afterhours hiking are available at the preserve ranger station during open hours, in person or by phone. Dogs are allowed on all trails on leashes. For additional information or to make a reservation for an interpretive program or the campground, call the preserve at 760.325.7222.

The Mission Creek Preserve is available for hiking year-round from the preserve gate at the end of Mission Creek Road. Please call (760) 369-7105 for more information about the Mission Creek Preserve.